

FAA Reports in photopia | reports

Tutorial Overview

In this tutorial you will evaluate a beam for compliance with the FAA Position and Anti Collision strobe lighting requirements.

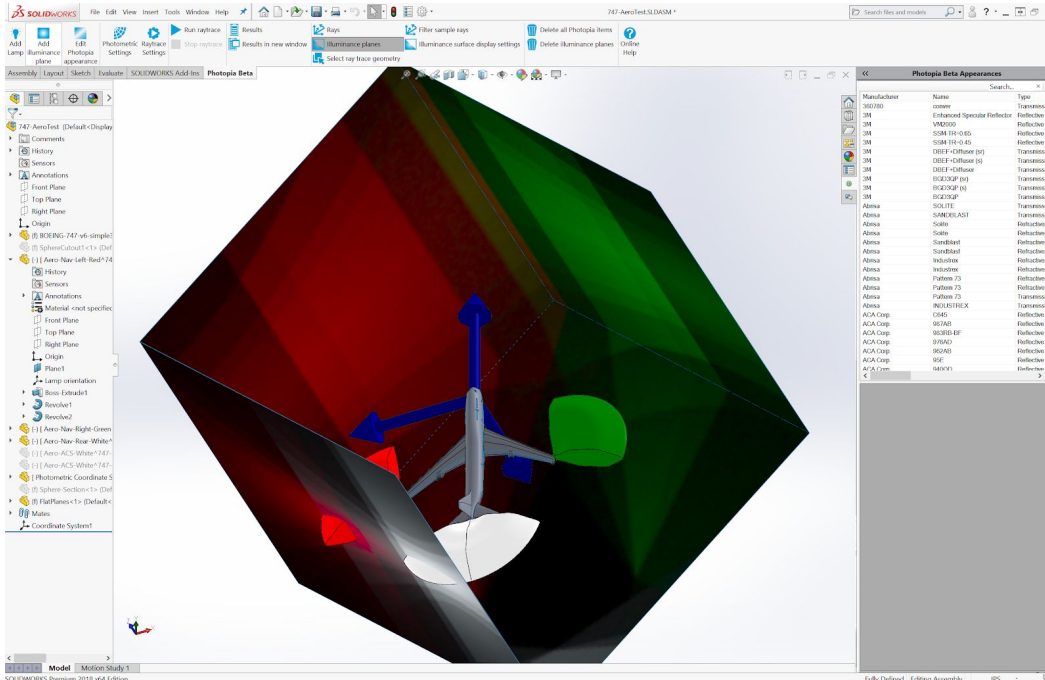
Topics Covered

- Type A Coordinate System Setup for Aerospace
- **photopia | reports** FAA Compliance Reports

Skill Level - Intermediate

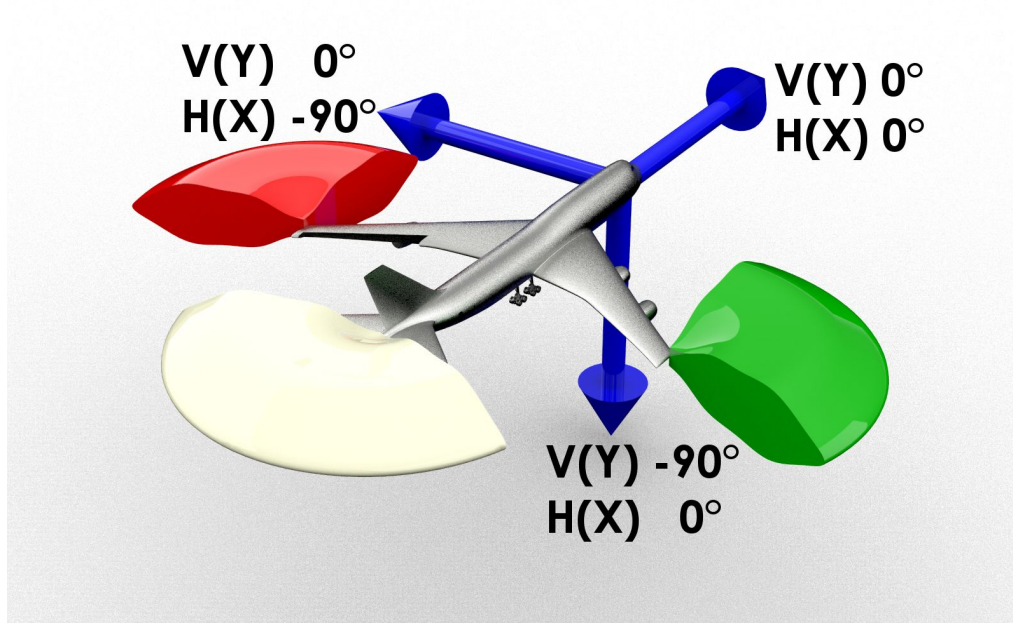
Interface - **photopia | reports**

Estimated Completion Time - 10min

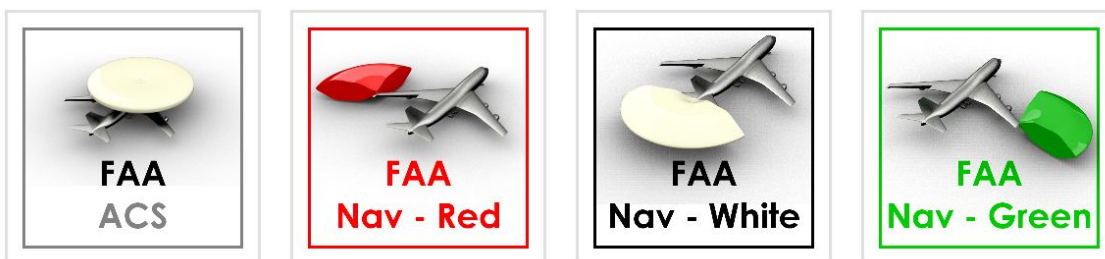


Check results against FAA requirements with photopia | reports

1. You'll first want to be sure that your IES file is Type A with the proper angle conventions, shown below.



2. Open **photopia | reports** on your computer, or right click on the IES file and choose Open to open in **photopia | reports**.
3. Choose "IES report" from the left hand menu.
4. Choose any of the FAA Compliance Reports from the thumbnails.



5. Within this report, you'll find an intensity false color plot which shows the intensity in candela, in the same orientation as your coordinate system, where 0,0 is dead ahead. The image below is for a red nav light.

FAA TSO-C30c Report

SAE AS8037: Aircraft Position Lights
Position Type I (forward, red, left)

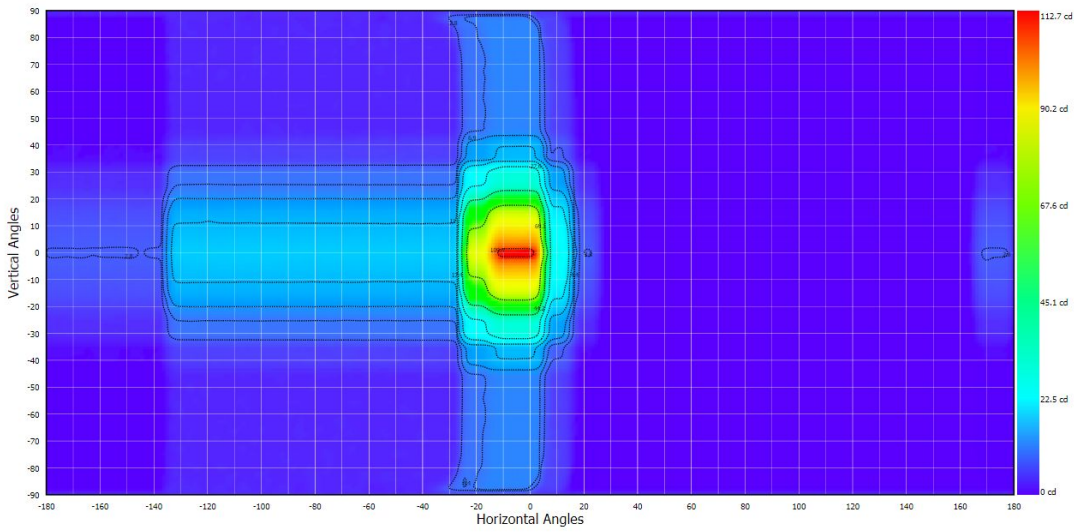


Report generated with:

photopia | reports
www.ltiptics.com

Manufacturer:
Luminaire Catalog Number:
Luminaire Description: 747-AeroTest
Test Lab: Photopia Beta for SOLIDWORKS 2019.0.1.9538 see: www.ltiptics.com/ies
Test Number:
Test Date: Wednesday, March 13, 2019 4:13:01 PM

H-V Intensity Plot



This report is NOT an indicator of product approval from FAA or SAE, but a tool to test a product against some of the requirements.

Report Format ©2019 LTI Optics, LLC
Report Type: FAA 18 PL-I P-2

6. The second page contains a reduced intensity table showing the % of target value at each location. Shaded boxes are regions with a minimum candela requirement. Colored text are regions with a maximum candela requirement (cutoff).

FAA TSO-C30c Report
SAE AS8037: Aircraft Position Lights
Position Type I (forward, red, left)



Report generated with:
photopia | reports
www.Itioptics.com

Manufacturer:
Luminaire Catalog Number:
Luminaire Description: 747-AeroTest
Test Lab: Photopia Beta for SOLIDWORKS 2019.0.1.9538 see: www.Itioptics.com/ies
Test Number:
Test Date: Wednesday, March 13, 2019 4:13:01 PM

Intensity Pass/Fail

20 of 3285 test points did not meet minimum required candela.
521 of 6716 test points exceeded maximum allowed candela.

Values below are % of required value.
Shaded boxes are regions where a minimum candela is required.
Colored text are regions where a maximum candela is allowed.
Red is failing, green is passing.

	-180	-170	-160	-150	-140	-130	-120	-110	-100	-90	-80	-70	-60	-50	-40	-30	-20	-10	0	10	20	30	40	50	60	70	80	90	100	110	120	130	140	150	160	170	180				
90	100	100	100	100	100	100	20	n/a	400	400	400	400	400	400	400	400	400	400	67	50	50	n/a	10	100	100	100	100	100	100	100	100	100	100	100	100	100	100	100	100		
80	0	0	0	0	0	0	20	n/a	400	400	400	400	400	400	400	400	400	400	333	300	300	n/a	0	0	0	0	0	0	0	0	0	0	0	0	0	0	0	0	0	0	
70	0	0	0	0	0	0	20	n/a	400	400	400	400	400	400	400	400	400	400	267	300	300	n/a	0	0	0	0	0	0	0	0	0	0	0	0	0	0	0	0	0	0	
60	0	0	0	0	0	0	20	n/a	400	400	400	400	400	400	400	400	400	400	267	300	300	n/a	0	0	0	0	0	0	0	0	0	0	0	0	0	0	0	0	0	0	
50	0	0	0	0	0	0	20	n/a	400	400	400	400	400	400	400	400	400	400	267	300	300	n/a	0	0	0	0	0	0	0	0	0	0	0	0	0	0	0	0	0	0	
40	0	0	0	0	0	0	20	n/a	200	200	200	200	200	200	200	200	200	300	275	275	n/a	0	0	0	0	0	0	0	0	0	0	0	0	0	0	0	0	0	0	0	
30	100	100	100	100	100	80	n/a	267	267	267	267	267	267	267	267	267	267	278	283	283	n/a	10	0	0	0	0	0	0	0	0	0	0	0	0	0	0	0	0	0	100	
20	100	100	100	100	100	140	n/a	280	280	280	280	280	280	280	280	280	280	280	280	280	280	n/a	10	0	0	0	0	0	0	0	0	0	0	0	0	0	0	0	0	0	100
10	200	200	200	200	200	220	n/a	275	275	300	275	275	275	275	275	275	275	283	281	281	n/a	20	0	0	0	0	0	0	0	0	0	0	0	0	0	0	0	0	0	200	
0	300	300	300	300	300	280	n/a	280	280	280	280	280	280	280	280	280	280	280	280	280	283	n/a	30	0	0	0	0	0	0	0	0	0	0	0	0	0	0	0	0	0	300
-10	200	200	200	200	200	240	n/a	275	275	300	275	275	275	275	275	275	279	281	281	n/a	20	0	0	0	0	0	0	0	0	0	0	0	0	0	0	0	0	0	0	200	
-20	100	100	100	100	100	140	n/a	280	280	280	280	280	280	280	280	280	280	280	280	280	280	n/a	10	0	0	0	0	0	0	0	0	0	0	0	0	0	0	0	0	0	100
-30	100	100	100	100	100	80	n/a	267	267	267	267	267	267	267	267	267	267	278	283	283	n/a	10	0	0	0	0	0	0	0	0	0	0	0	0	0	0	0	0	0	0	100
-40	0	0	0	0	0	0	20	n/a	200	200	200	200	200	200	200	200	200	267	275	275	n/a	0	0	0	0	0	0	0	0	0	0	0	0	0	0	0	0	0	0	0	
-50	0	0	0	0	0	0	20	n/a	400	400	400	400	400	400	400	400	400	267	300	300	n/a	0	0	0	0	0	0	0	0	0	0	0	0	0	0	0	0	0	0	0	
-60	0	0	0	0	0	0	20	n/a	400	400	400	400	400	400	400	400	400	267	300	300	n/a	0	0	0	0	0	0	0	0	0	0	0	0	0	0	0	0	0	0	0	
-70	0	0	0	0	0	0	20	n/a	400	400	400	400	400	400	400	400	400	267	300	300	n/a	0	0	0	0	0	0	0	0	0	0	0	0	0	0	0	0	0	0	0	
-80	0	0	0	0	0	0	20	n/a	400	400	400	400	400	400	400	400	400	267	300	300	n/a	0	0	0	0	0	0	0	0	0	0	0	0	0	0	0	0	0	0	0	
-90	100	100	100	100	100	20	n/a	400	400	400	400	400	400	400	400	400	400	67	50	50	n/a	10	100	100	100	100	100	100	100	100	100	100	100	100	100	100	100	100	100		

Complete

Congratulations! You have completed the FAA Reports in **photopia | reports**.

For more information and tutorials please visit our website at www.Itioptics.com. If you have any questions don't hesitate to reach out to our support team at photopia@Itioptics.com.